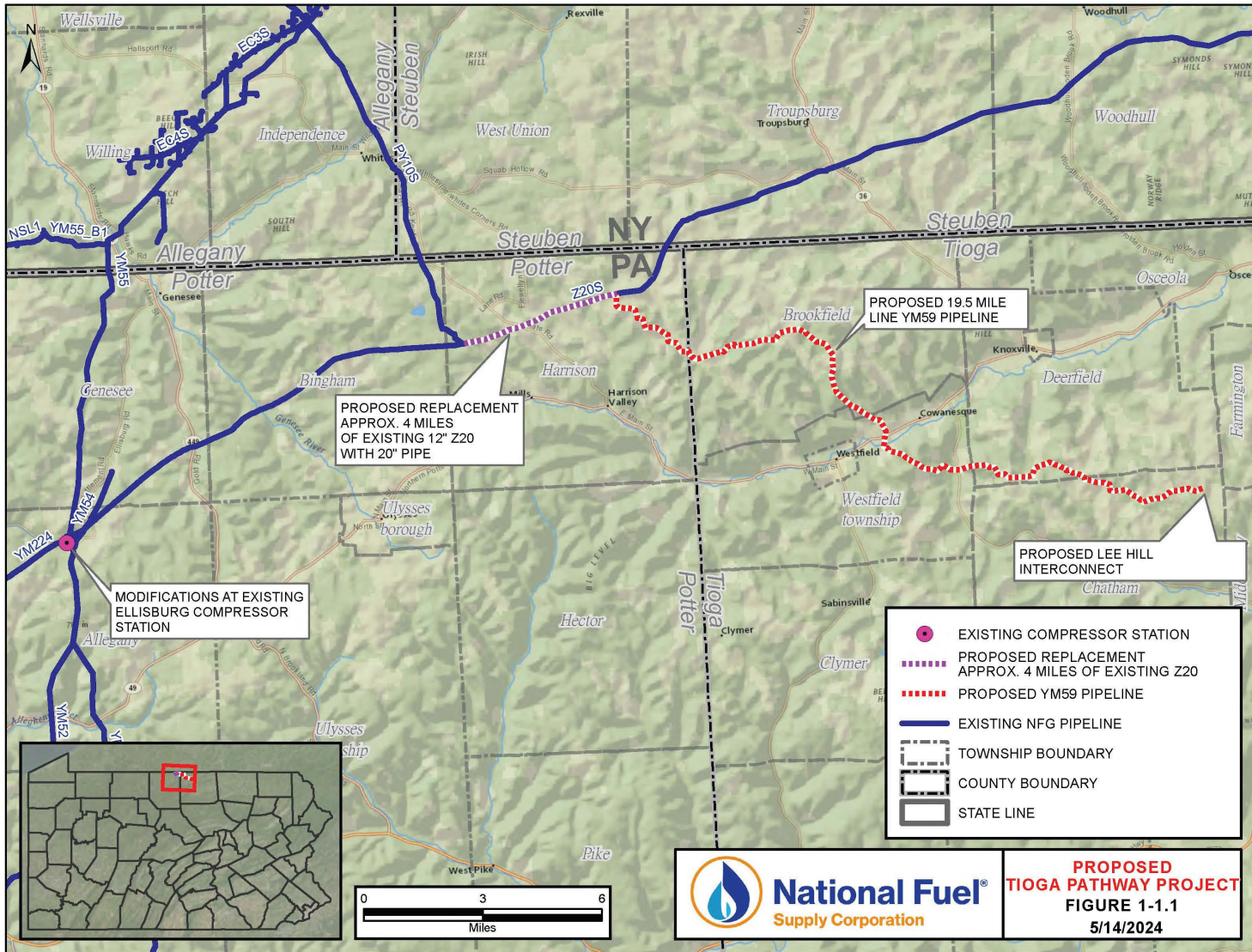




NATIONAL FUEL GAS SUPPLY CORPORATION
TIOGA PATHWAY PROJECT

DISPLAY POSTERS FROM THE JUNE 13, 2024 OPEN HOUSE

Tioga Pathway Project Overview Map



National Fuel Gas Company

- A diversified energy company with more than 120 years of experience in New York and Pennsylvania
- Business segments include:
 - Exploration and production: develops and produces natural gas
 - Gathering: owns and operates natural gas processing and pipeline facilities
 - Pipeline and storage: owns and operates more than 2,400 miles of interstate natural gas pipelines and 29 storage fields
 - Utility: transports natural gas to more than 740,000 customers



Pennsylvania Territory

- Approximately 920 employees
 - Our employees and retirees work, live and raise families in our operational footprint
- \$7 billion in investments in NY and PA since 2012
- Currently serving 23 counties, with the Utility reaching .5 million people
- All segments of the Company's unique, integrated business model present in the state
- Dates back to the 1880s and the origins of the industry in PA and originally part of John D. Rockefeller's Standard Oil Natural Gas Trust



Tioga Pathway Project: Objectives & Benefits

- Connect locally-produced natural gas to the interstate pipeline grid
 - Provides outlet for low-cost, clean natural gas
 - Ensures incremental gas supply to the region and to the interstate pipeline grid
 - Helps meet local, regional and North American demand
- Modernize National Fuel's existing pipeline system
 - Replaces 4 miles of vintage pipeline with state-of-the-art, high-strength coated steel
 - Further enhances safety, security, and reliability
 - Provides emissions reduction opportunities



What is FERC?

- Federal Energy Regulatory Commission:
 - Independent agency that regulates interstate transmission of natural gas
 - Authority for siting, construction and operation of facilities for transporting natural gas in interstate commerce
 - Oversees environmental matters for gas projects
 - Project is proposed under the Natural Gas Act



Office of Public Participation (OPP)

- Facilitate greater understanding of Commission processes
- Supports the public in participating in FERC proceedings
 - How to Intervene or Comment
 - Guidance for using FERC's eFiling system and eLibrary
 - Answer inquiries from the public

Impact on the region and community

- Direct investment of approx. \$100 million in North-Central Pennsylvania
- Approx. \$17 million indirect economic activity
- Creating 350 jobs during construction
- Supporting local businesses during construction and operation
- Proven robust environmental controls preserving the environment and farmland

How we selected the route

- Minimize impact to landowners, including those within Environmental Justice communities
- Engineering and technical considerations
- Constructability considerations
- Minimize disturbance to land, including active farmland
- Natural resource preservation
- Cultural and archeological resource preservation
- Co-locating proposed facilities near existing facilities, where possible



Project Components

- Construction of approx. 19.5 miles of new pipeline (Line YM59), located in Tioga and Potter counties
- Replacement of approx. 4 miles of existing pipeline facilities on Supply's Line Z20 pipeline system, located in Potter County
- Construction of the McCutcheon Hill Over-Pressure Protection (OPP) Station to connect proposed Line YM59 to Line Z20, located in Potter County
- Install measurement equipment and other related facilities at the NFG Midstream Covington, LLC (Midstream) Lee Hill Interconnect to connect the proposed YM59 Pipeline to Midstream's facilities at the east end of the Project in Chatham Township, Tioga County
- Minor modifications at Supply's Ellisburg Station, located in Potter County

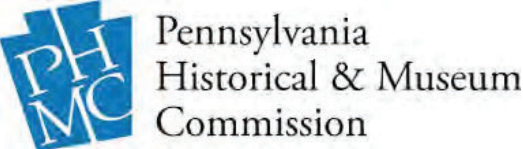
Safety

- Use of safe and reliable pipe, materials and equipment, supported by safety management system
- Pipeline facilities are constructed and maintained to meet or exceed federal safety code:
 - High strength carbon steel with modern fusion bonded epoxy coating
 - Coating protected with Rockshield and/or select screened backfill
 - Minimum 3 foot of cover
 - 100% of welds are X-rayed
 - Hydrostatically pressure tested
 - Cathodically protected
- Long-standing operator with more than a century of experience in the region and an outstanding safety record
- System monitored 24/7/365 by National Fuel's Gas Control facility
- Remote Control Valves
- Regulated and inspected by the U.S. Department of Transportation and Federal Energy Regulatory Commission
- Routine inspections once in service

Environmental Stakeholder Involvement



US Army Corps of Engineers®



Proposed Timeline

JUNE 2023

Preliminary route review (tabletop map review and desktop review via publicly available data sets)

SEPTEMBER 2023

Landowner information session
Begin landowner notification and survey permission

OCTOBER 2023 - JULY 2024

Survey, environmental, and engineering studies of preferred route

JUNE 2024

Open house for stakeholders, including Environmental Justice communities
Commence right-of-way acquisition

LATE SUMMER 2024

Submit 7(b) and (c) application to Federal Energy Regulatory Commission

FALL/WINTER 2024

Regulatory agencies review and environmental assessment

SUMMER 2025

Anticipated Federal Energy Regulatory Commission approval

EARLY CALENDAR YEAR 2026

Begin timber clearing and site activities

JUNE 2026

Construction begins

JULY 2026

Restoration begins

FALL 2026

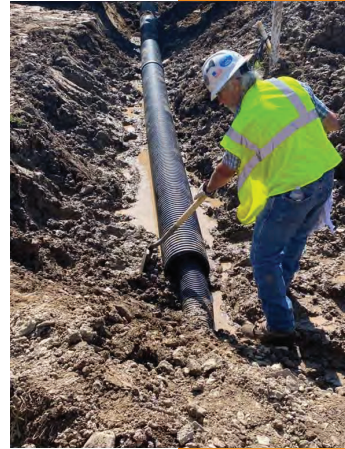
Target in-service date

SUMMER 2027

Complete remaining restoration

Agricultural Area Considerations

**Drain Tile
Remediation**



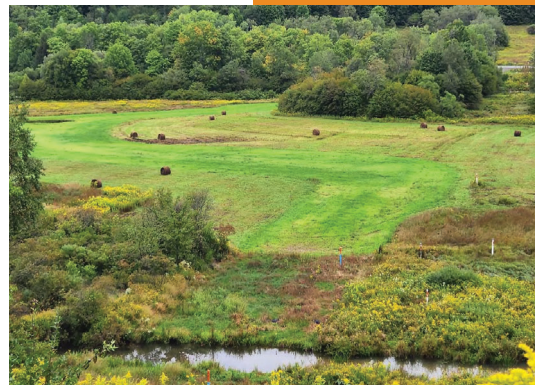
**Topsoil
Segregation**



**Decompaction
of Subsoil**



**Crops on
Pipeline**



WELCOME

Thank you for attending today's open house. Should you need translation services, please connect with Carly Manino from our Corporate Communications department.

BIENVENIDO

Gracias por asistir a la jornada de puertas abiertas de hoy. Si necesita servicios de traducción, comuníquese con Carly Manino de nuestro departamento de Comunicaciones Corporativas.



National Fuel®
Supply Corporation

Visitors with hearing or speech difficulties, please connect with Carly Manino from our Corporate Communications department at maninoc@natfuel.com if you'd like to schedule a special session utilizing electronic display through 711.

Los visitantes con dificultades auditivas o del habla deben comunicarse con Carly Manino de nuestro departamento de Comunicaciones Corporativas en maninoc@natfuel.com si desean programar una sesión especial utilizando una pantalla electrónica a través del 711.



National Fuel®
Supply Corporation

**Scan the QR code to view
information about the
Tioga Pathway Project
on our website.**



National Fuel
Supply Corporation