



National Fuel[®]
Supply Corporation

Tioga Pathway Project

National Fuel Gas Supply Corporation
Sept. 28, 2023

National Fuel Gas Company

- A diversified energy company with more than 120 years experience in New York and Pennsylvania.
- Business segments include:
 - **Exploration and production**- develops and produces natural gas
 - **Gathering**- owns and operates natural gas processing and pipeline facilities
 - **Pipeline and storage**- owns and operates more than 2,400 miles of interstate natural gas pipelines and 29 storage fields
 - **Utility**- transports natural gas to more than 740,000 customers

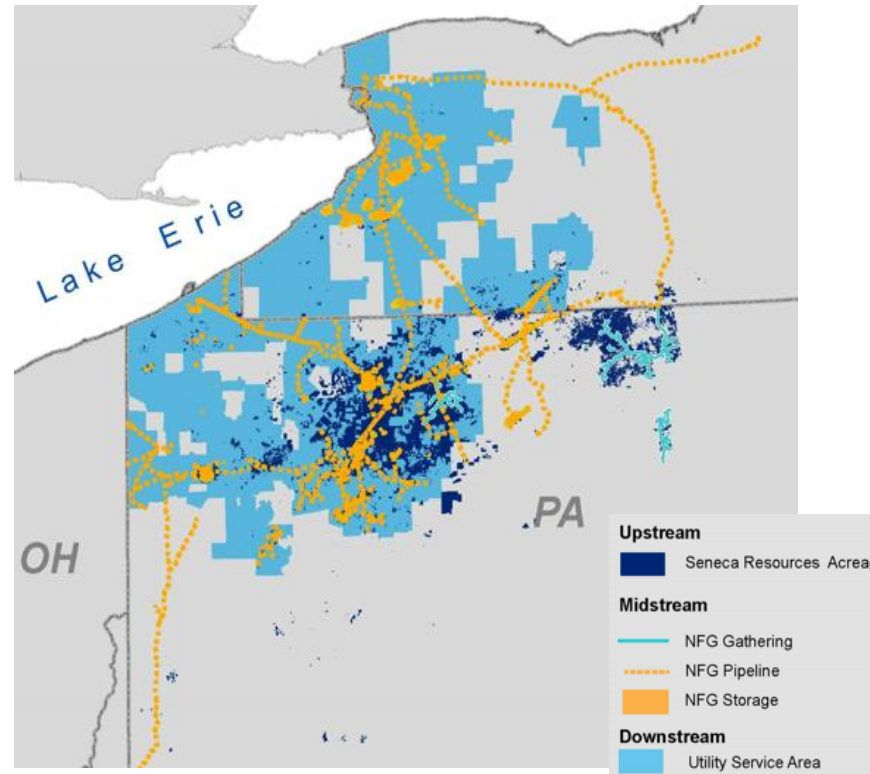


The Home Team

NFG is a large public energy company with corporate offices in Williamsville, NY and Erie, PA

1,940
Full-Time
Employees

1,066
Union
Employees



\$7 Billion
Investments in NY &
PA since 2012

740,000
Utility accounts served
1.2 million people NY
.5 million people PA

Our employees and retirees work, live and raise families in our operational footprint

Pennsylvania Territory

- Approximately 700 employees.
- All segments of the company's unique, integrated business model present in Pennsylvania.
- Currently serving 23 counties.
- Dates back to the 1880s and the origins of the industry in Pennsylvania.
- Originally part of John D. Rockefeller's Standard Oil Natural Gas Trust.

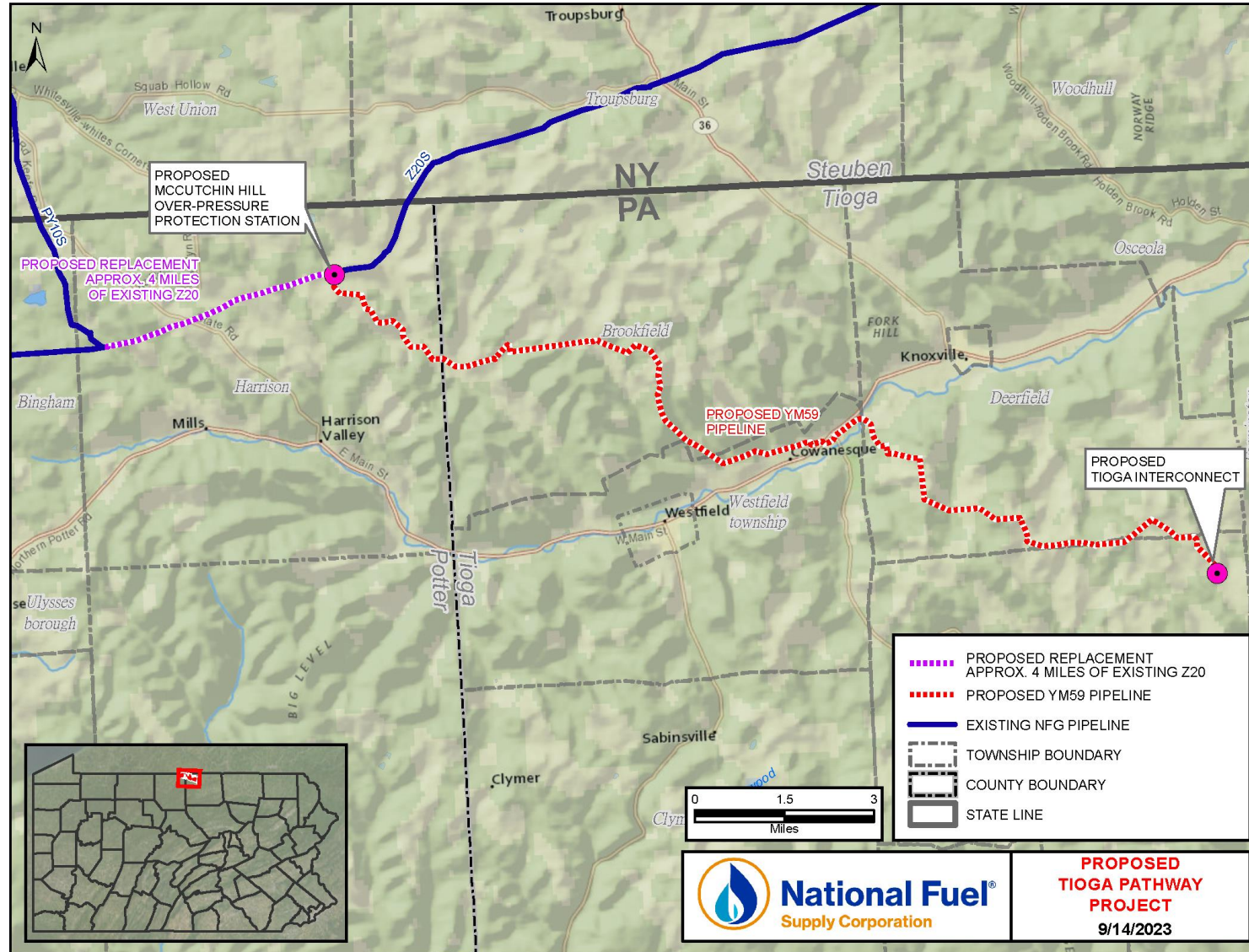


Why are we here?

- Extensive community involvement at an early point in the Tioga Pathway Project.
- Open dialogue with landowners and the public:
 - Answer questions.
 - Listen to comments.
 - Gather input.
- Question and answer period to follow presentation.



Project Overview Map



Project Components

Specific project components include:

- Construction of approximately 19.5 miles of new 16-inch diameter pipeline (Line YM59), located in Tioga and Potter counties, Pennsylvania;
- Replacement of approximately 4 miles of existing pipeline facilities on Supply's Line Z20 pipeline system, located in Potter County, Pennsylvania;
- Construction of the McCutchin Hill Over-Pressure Protection (OPP) Station to connect proposed Line YM59 to Line Z20, located in Potter County, Pennsylvania;

Project Components - Continued

- Construction of the Tioga Interconnect with NFG Midstream Covington, LLC, the eastern end of proposed Line YM59, Tioga County, Pennsylvania;
- Modifications at Supply's Ellisburg Station, located in Potter County, Pennsylvania

Tioga Pathway Project: Objectives & Benefits

Connect locally-produced natural gas to the interstate pipeline grid

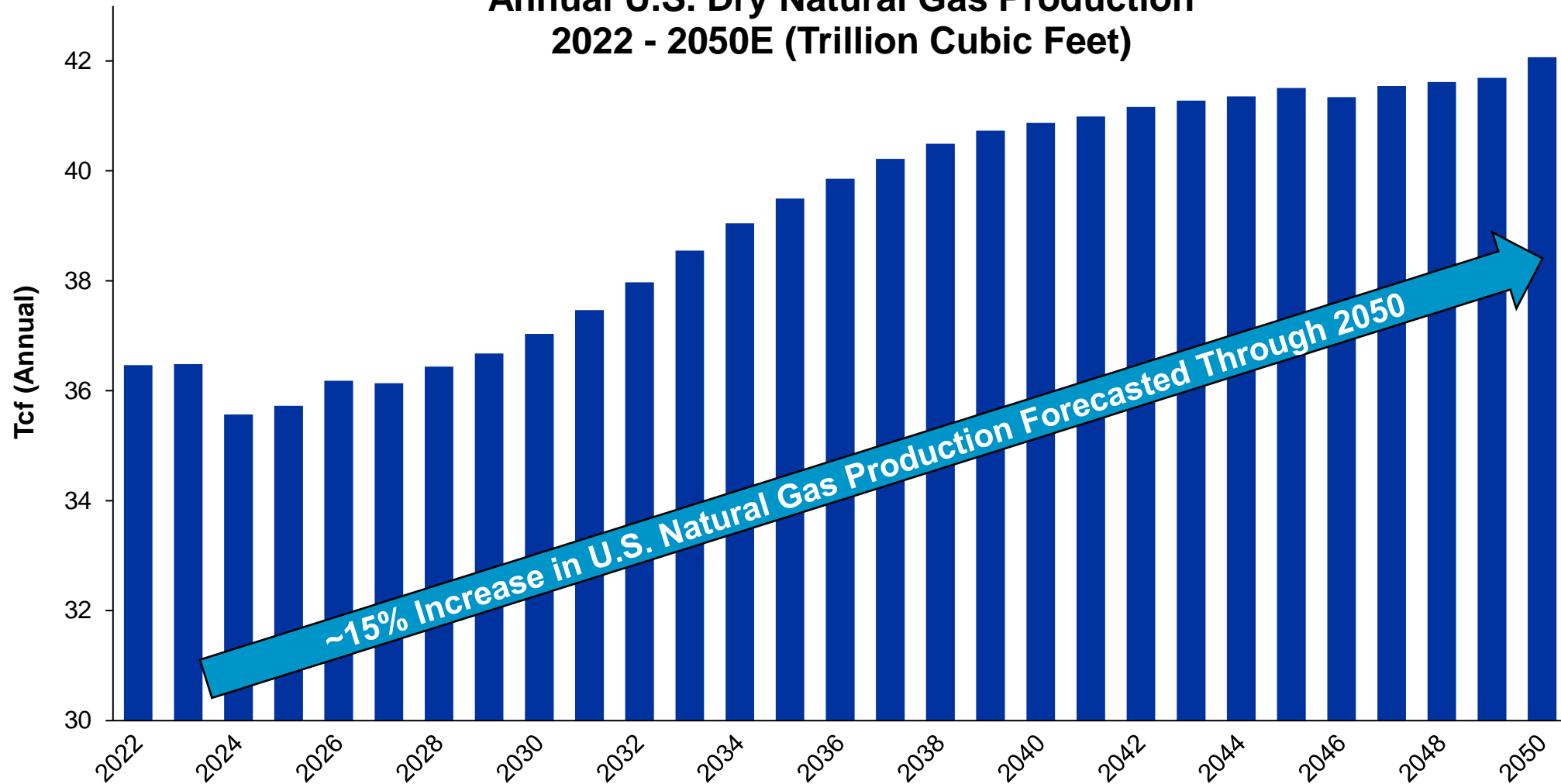
- Provides outlet for low-cost, clean burning natural gas
- Ensures incremental gas supply to the region and to the interstate pipeline grid
- Helps meet local, regional and North American demand

Modernize National Fuel's existing pipeline system

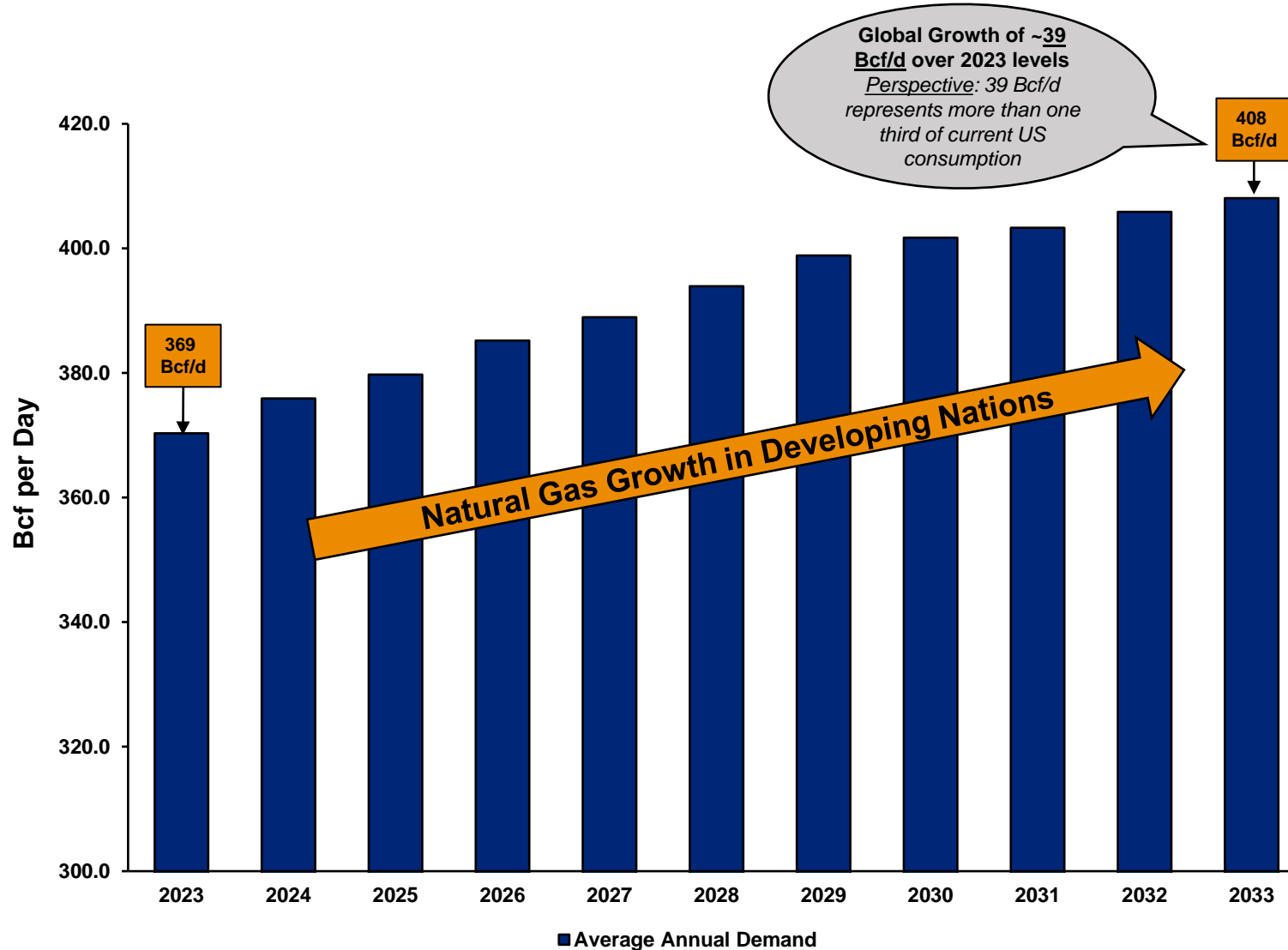
- Replaces 4 miles of vintage pipeline with state-of-the-art, high-strength coated steel
- Further enhances safety, security, and reliability
- Provides emissions reduction opportunities

Projected Natural Gas Production

Annual U.S. Dry Natural Gas Production
2022 - 2050E (Trillion Cubic Feet)

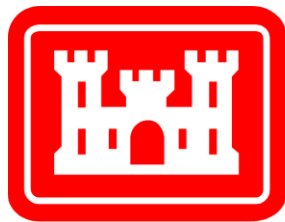


Projected Natural Gas Demand - Global



Regulatory Involvement

- Federal Agencies
 - Federal Energy Regulatory Commission (FERC)
 - U.S. Army Corps of Engineers (USACE)
 - U.S. Fish and Wildlife Service (USFWS), Pennsylvania Field Offices
 - U.S. Department of Transportation (DOT) (PHMSA)
 - Environmental Protection Agency (EPA)
 - Various Native American Tribal Group Contacts

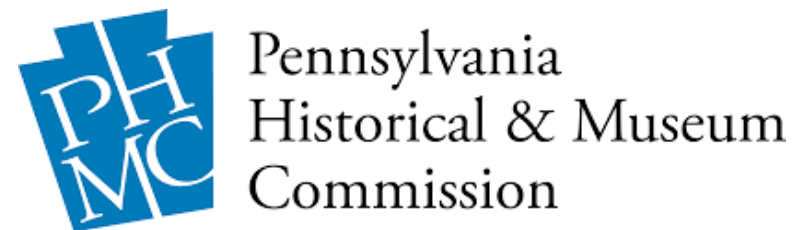


**US Army Corps
of Engineers®**



Regulatory Engagement (continued)

- Commonwealth of Pennsylvania Agencies
 - Pennsylvania Department of Conservation and Natural Resources (DCNR)
 - Pennsylvania Fish and Boat Commission (PAFBC)
 - Pennsylvania Game Commission (PGC)
 - Pennsylvania Department of Environmental Protection (PADEP)
 - Pennsylvania Historical and Museum Commission, Bureau for Historic Preservation, State Historic Preservation Office (SHPO)



Regulatory Involvement (continued)

- Local Municipal Agencies
 - County/Town Building Permits
 - Road Use/Opening Permits
 - Driveway Access Permits
 - Local County Conservation Districts



What is FERC?

- Federal Energy Regulatory Commission:
 - Independent agency that regulates interstate transmission of natural gas
 - Authority for siting, construction and operation of facilities for transporting natural gas in interstate commerce
 - Oversees environmental matters related to natural gas projects
 - Project is proposed under the Natural Gas Act



FERC and Stakeholders

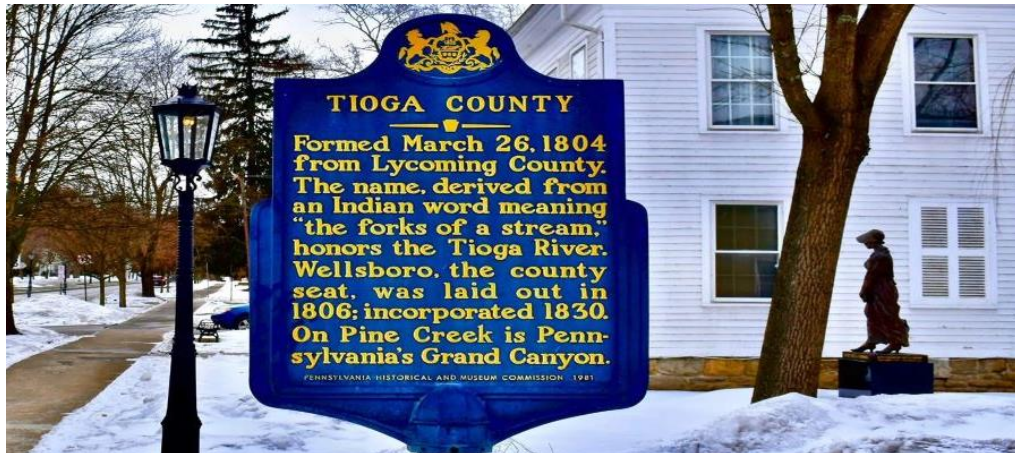
- Office of Public Participation (OPP)
 - Facilitate greater understanding of Commission processes
 - Supports the public in participating in FERC proceedings
 - How to Intervene or Comment
 - Guidance for using FERC's eFiling system and eLibrary
 - Answer inquiries from the public

Proposed Timeline

Summer 2023	Preliminary route review (tabletop map review and desktop review via publicly available data sets)
September 2023	<ul style="list-style-type: none">• Landowner information session• Begin landowner notification and survey permission
October 2023 – July 2024	Survey, environmental and engineering studies of preferred route
November 2024	Submit 7(b) and (c) application to FERC
February 2024	Right of way acquisition, continue environmental studies as necessary
December 2025	Anticipate FERC approval
February 2026	Begin timber clearing and site activities
June 2026	Construction begins
July 2026	Restoration begins
October 2026	Target in-service date
Summer 2027	Remaining restoration

Impact on the Region and Community

- Investing over \$80 million in North-Central Pennsylvania.
- Creating 300 jobs during construction.
- Supporting local businesses during construction and operation.
- Proven robust environmental controls preserving the environment and farmland.



Factors in Selection of Route and Facilities Location

- Minimize impact to landowners, including those within Environmental Justice communities.
- Engineering and technical considerations.
- Constructability considerations.
- Minimize disturbance to land, including active farmland.
- Natural resource preservation.
- Cultural and archeological resource preservation.
- New stations near existing facilities.

INGAA Commitments to Responsible Pipeline Construction

The Interstate Natural Gas Association of America (INGAA) has long stood for safe and responsible construction and operation of natural gas pipelines.

- Each INGAA member company embraces the following commitments:
 1. Ensuring Safe & Quality Construction
 2. Caring for Communities & Landowners
 3. Preserving Environmental Resources
 4. Respecting Regulations

<https://ingaa.org/commitments-to-responsible-pipeline-construction/>

INGAA Commitments to Landowners

INGAA is committed to leading an industry that builds and maintains strong positive relationships with Landowners.

- Each INGAA member company embraces the following commitments:
 1. Respect and Trust
 2. Accurate and Timely Information
 3. Negotiate in Good Faith
 4. Responding to Issues
 5. Respect the Regulatory Compact
 6. Limiting Eminent Domain
 7. Outreach
 8. Industry Ambassadors
 9. Ongoing Commitment to Continuous Improvement

<https://ingaa.org/commitments-to-landowners/>

Proven Results – Potter County



During



After

Proven Results - Potter County Continued



Active Construction

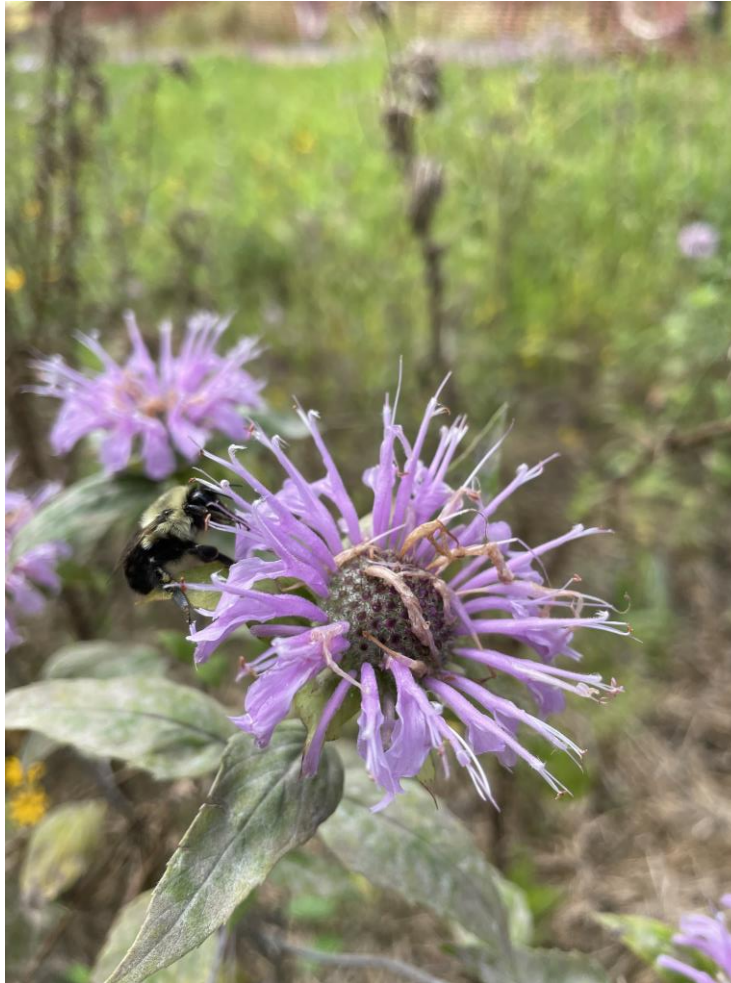


After Construction

- Re-spreading topsoil back onto the right of way after construction and subsoil decompaction

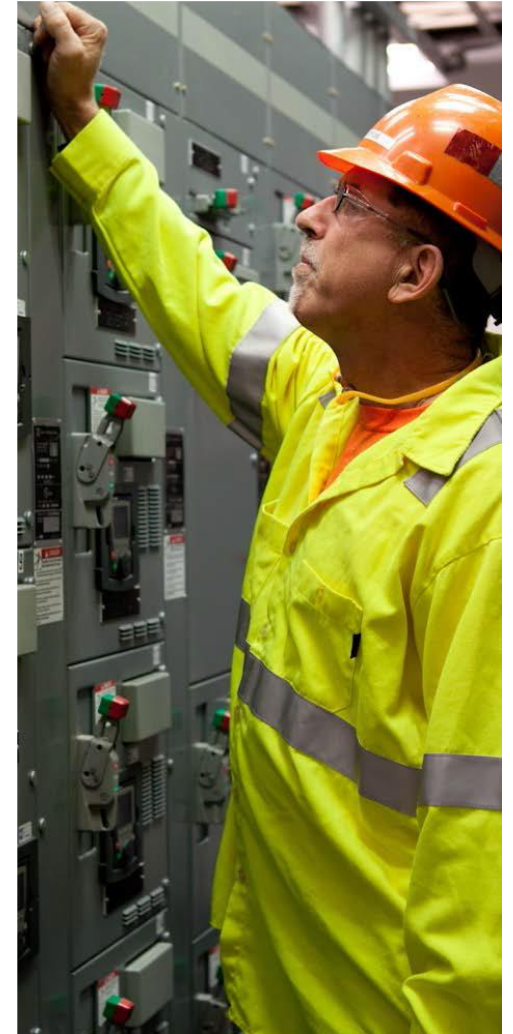


Restoration Focused on Pollinators



Safety

- Safe and reliable pipe, materials and equipment with proven safety management system.
- Pipeline facilities are constructed and maintained to meet or exceed federal safety code:
 - High strength carbon steel with modern fusion bonded epoxy coating.
 - Coating protected with Rockshield and/or select screened backfill.
 - Minimum 3 foot of cover.
 - 100% of welds are X-rayed.
 - Hydrostatically pressure tested.
 - Cathodically protected.



Safety - Continued

- Outstanding safety record.
- System monitored 24/7/365 by National Fuel Gas Control.
- Remote Control Valves.
- Regulated and inspected by the U.S. Department of Transportation (DOT) and FERC.
- Routine inspections once in service.

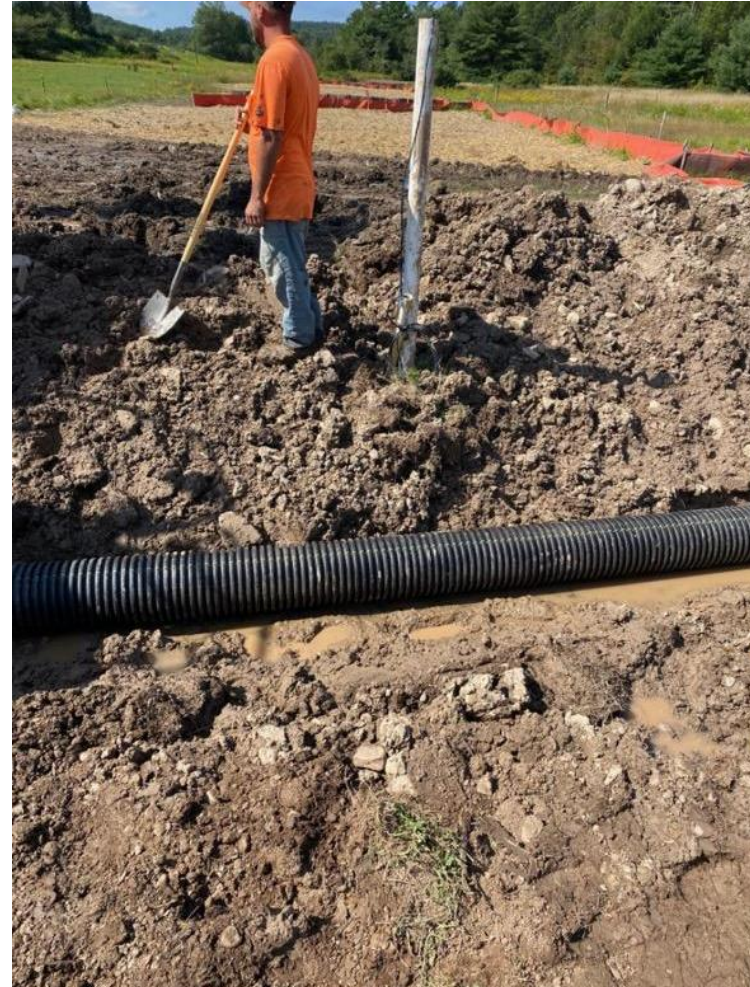
Agricultural Area Considerations

- Topsoil segregation.
- Drain tile repair.
- Subsoil decompaction.
- Excess rock removal from at least top 12” of soil.
- Minimum 4’ depth of cover.
- Successful restoration achieved when crop growth and vigor is similar to adjacent undisturbed portions.
- Crop loss compensation until crop production similar to adjacent undisturbed portions is achieved.



Agricultural Area Considerations - Continued

- Drain Tile Repair



Agricultural Area Considerations - Continued

- Topsoil segregation



Agricultural Area Considerations - Continued

- Decompaction of subsoil



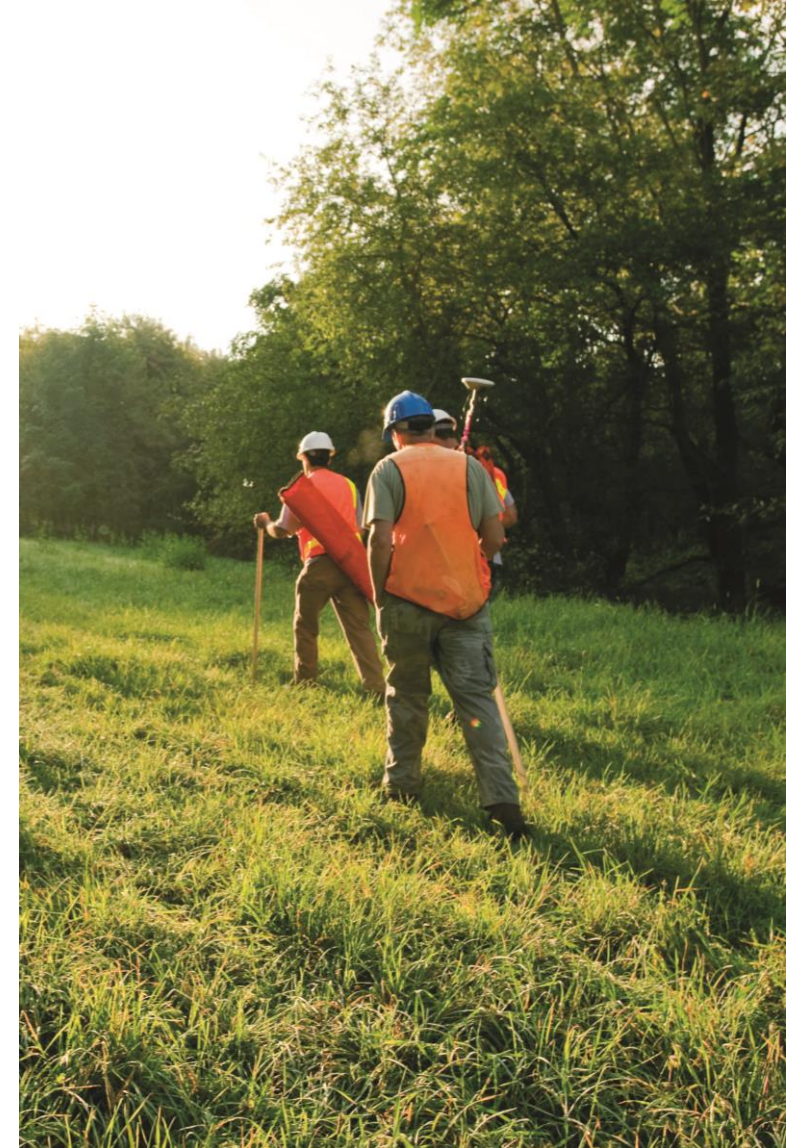
Agricultural Area Considerations - Continued

- Restoring disturbed areas to preconstruction productivity



Surveying your land

- Surveying property – completed by walking land and ATVs, colored flagging and stakes installed.
- Minimal disturbance by shovel testing, if necessary.
- Test holes repaired upon completion of testing.
- Surveying does not harm the land.
- Company representatives carry photo ID at all times.
- Will not ask to enter your home for any reason.
- Allows for communication with landowners.



Landowner Compensation

- Landowners will be appropriately compensated for economic loss/use (crop and timber damage) caused by construction.
- New proposed pipeline and facility easements will be acquired through negotiation based on comparable property sales and/or current market value.
- Land will be restored to original or better condition.

Contact Information

Carly Manino
Senior Director, Corporate Communications
1-800-458-0413, Ext. 4199
maninoc@natfuel.com

Feedback c/o Corporate Communications
1100 State St.
Erie, Pa. 16501

A large, stylized graphic of a leaf or flame shape, rendered in a lighter shade of orange, is positioned on the right side of the slide. It has a pointed top and a rounded bottom, with a central vein or stem-like structure.

Questions?